

## AVAILABLE NOW



©2022 Schmidt Builders

**\$639,900**

**Style** Ranch

**Sq. Ft.** 2,320

**Bed** 3

**Bath** 2.5

**Garage** 3-Car  
*with garage door openers*

### Home Features:

- Covered porch & rear deck
- Luxury vinyl plank floors
- Stainless steel GE appliances
- Kitchen island
- Solid surface countertops
- Luxury primary bedroom suite and bath
- Separate laundry room with sink
- Unfinished lower level
- 12-month warranty
- Zero closing costs

Traditions Begin Here.

**SIBCYCLINE**  
REALTORS



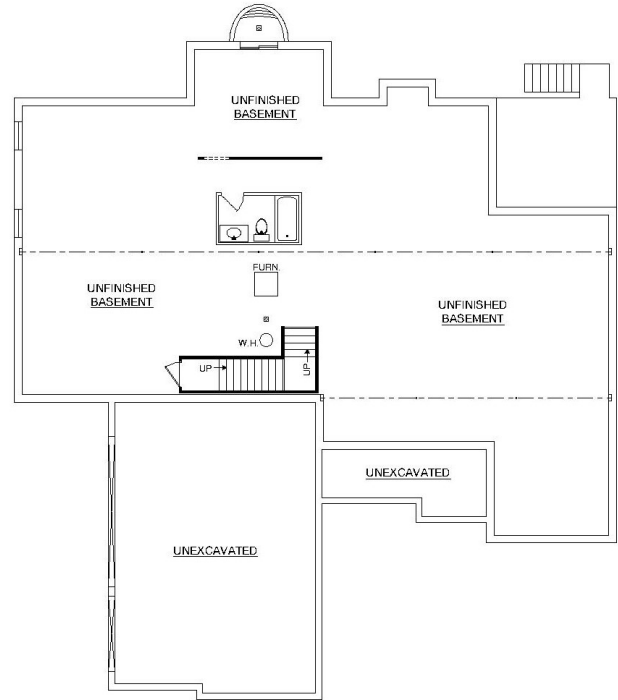
Larry Thinner, Realtor | (513) 720 - 9900 | larry.thinner@gmail.com | schmidtbuilders.com  
Jaime Thinner-Neumaier, Realtor | (513) 379-1254 | jthinnerneumaier@sibcycline.com





## Main Level

©2022 Schmidt Builders



## Lower Level

©2022 Schmidt Builders

Because we are constantly improving our product, we reserve the right to change product features, brand names, dimensions, architectural details and design. This brochure is for illustrative purposes only and is not part of any legal binding contract. Pricing and availability subject to change without notice. 3/6/25

Traditions Begin Here.



Larry Thinner, Realtor | (513) 720 - 9900 | larry.thinner@gmail.com | schmidtbuilders.com  
Jaime Thinner-Neumaier, Realtor | (513) 379-1254 | jthinnerneumaier@sibcycleline.com

