

## SPRING 2025



©2022 Schmidt Builders. Rendering is artist rendition and may not reflect actual home details, materials, and colors.

**\$751,600**

**Style** Ranch

**Sq. Ft.** 3,276

**Bed** 4

**Bath** 3.5

**Garage** 3-Car  
*with garage door  
openers*

### Home Features:

- Covered front porch
- Finished lower level
- Natural gas fireplace
- Luxury vinyl plank floors
- Large kitchen island
- Gourmet kitchen with GE stainless steel appliances
- Main level study
- Spacious owner's suite walk-in shower
- Covered rear deck
- Landscaped
- New home warranty

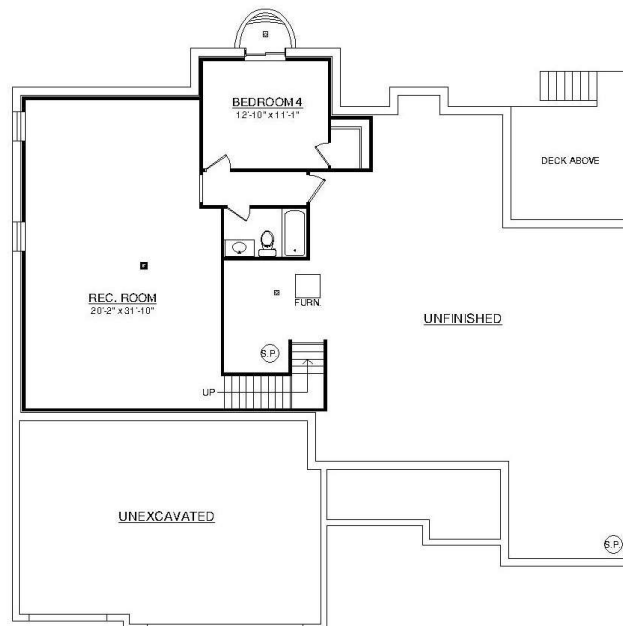
The Estates of Monroe Crossings Model Home: 200 Shyla Ct., Monroe, OH





## Main Level

©2024 Schmidt Builders



## Lower Level

©2024 Schmidt Builders

Because we are constantly improving our product, we reserve the right to change product features, brand names, dimensions, architectural details and design. This brochure is for illustrative purposes only and is not part of any legal binding contract. 11/18/24