

## SPRING 2025



©2024 Schmidt Builders. Rendering is artist rendition and may not reflect actual home details, materials, and colors.

**\$835,000**

**Style** Ranch

**Sq. Ft.** 3,487

**Bed** 4

**Bath** 3.5

**Garage** 3-Car  
with garage door  
openers

### Home Features:

- Covered front entry
- Covered patio
- Gourmet kitchen with solid surface countertops, upgraded 42" cabinets, and GE stainless steel appliances
- Luxury vinyl plank floors
- Gas fireplace
- Finished lower level
- 3-Car side garage
- New home warranty
- Landscaped

The Estates at Wynds of Liberty Model Home: 5020 Fescue Dr., Liberty Township, OH



Traditions Begin Here. | (513) 604-0599 | [jfehring@schmidtbuilders.com](mailto:jfehring@schmidtbuilders.com) | [schmidtbuilders.com](http://schmidtbuilders.com)

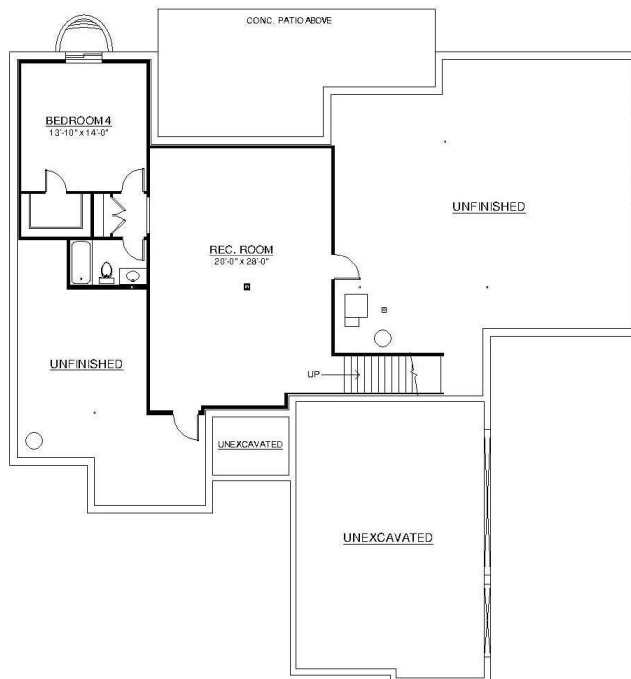
**Schmidt Builders - 4th generation home builder since 1958.**





## Main Level

©2024 Schmidt Builders



## Lower Level

©2024 Schmidt Builders

Because we are constantly improving our product, we reserve the right to change product features, brand names, dimensions, architectural details and design. This brochure is for illustrative purposes only and is not part of any legal binding contract. 3/7/25