

SPRING 2025



©2024 Schmidt Builders. Rendering is artist rendition and may not reflect actual home details, materials, and colors.

\$820,400

Style Ranch

Sq. Ft. 3,279

Bed 4

Bath 3

Garage 3-Car
with garage door
openers

Home Features:

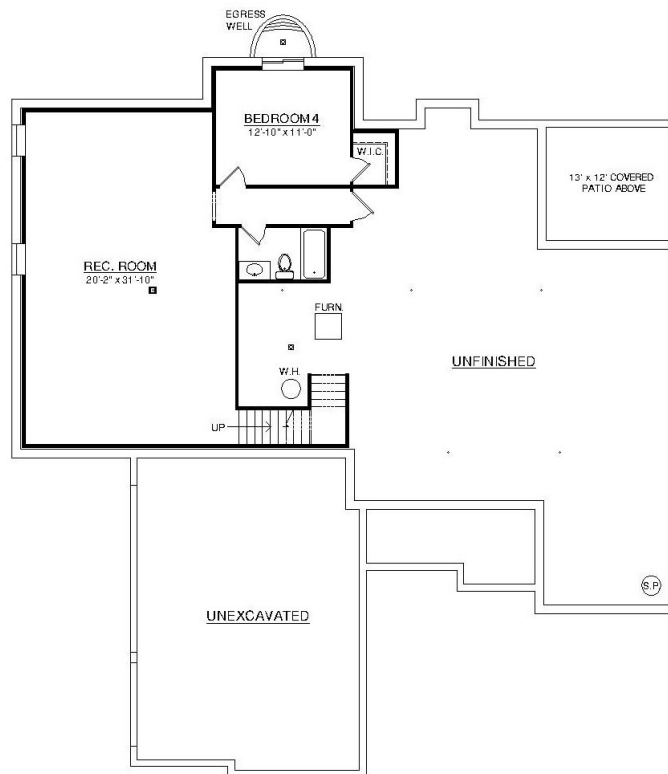
- Covered front entry porch
- Covered patio
- Gourmet kitchen with solid surface countertops, upgraded 42" cabinets, and GE stainless steel appliances
- Luxury vinyl plank floors
- Gas fireplace
- Finished lower level
- 3-Car garage
- New home warranty
- Landscaped

The Estates of Monroe Crossings Model Home: 200 Shyla Ct., Monroe, OH





Main Level
©2024 Schmidt Builders



Lower Level
©2024 Schmidt Builders

Because we are constantly improving our product, we reserve the right to change product features, brand names, dimensions, architectural details and design. This brochure is for illustrative purposes only and is not part of any legal binding contract. 11/18/24