

MOVE-IN READY!



\$704,300

Style 2-Story

Sq. Ft. 3,148

Bed 4

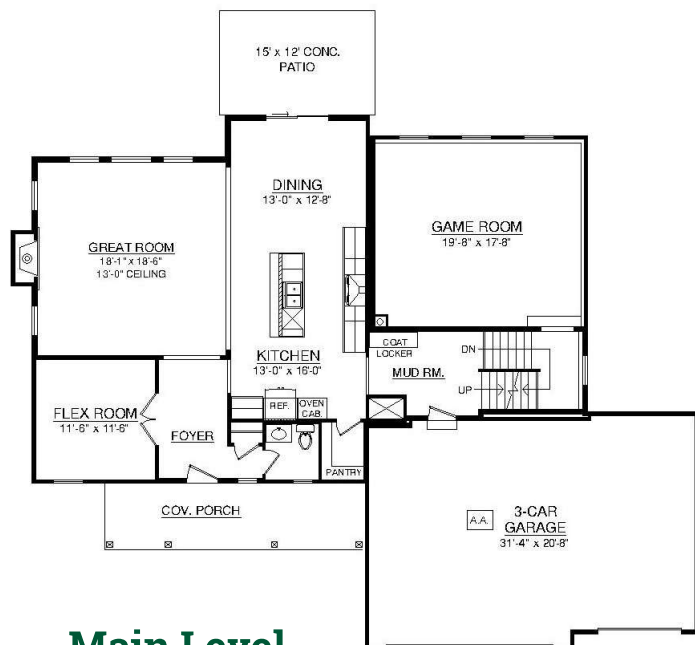
Bath 2.5

Garage 3-Car
with garage door
openers

Home Features:

- Covered front porch
- Unfinished lower level
- Natural gas fireplace
- Luxury vinyl plank floors
- Large kitchen island
- Gourmet kitchen with GE stainless steel appliances
- Step down game room
- Flex room off foyer
- Upper level laundry room
- Delta Faucets throughout
- Spacious and secluded primary bedroom suite
- Landscaped
- New home warranty

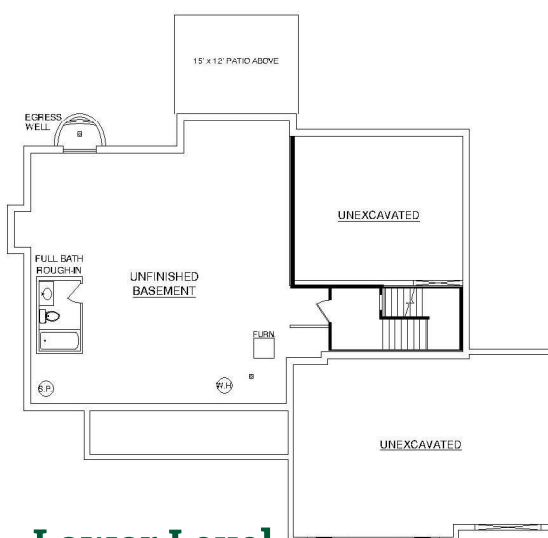
The Estates at Wynds of Liberty Model Home: 5020 Fescue Dr., Liberty Township, OH



Main Level
©2024 Schmidt Builders



Upper Level
©2024 Schmidt Builders



Lower Level
©2024 Schmidt Builders

Because we are constantly improving our product, we reserve the right to change product features, brand names, dimensions, architectural details and design. This brochure is for illustrative purposes only and is not part of any legal binding contract. 10/2/24