

AVAILABLE SOON!



©2022 Schmidt Builders. Rendering is artist rendition and may not reflect actual home details, materials, and colors.

\$614,800

Style	2-Story
Sq. Ft.	2,867
Bed	5
Bath	3
Garage	3-Car <i>with garage door openers</i>

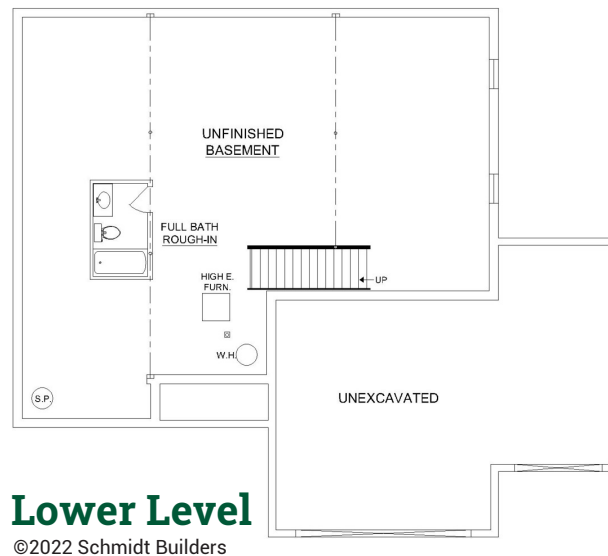
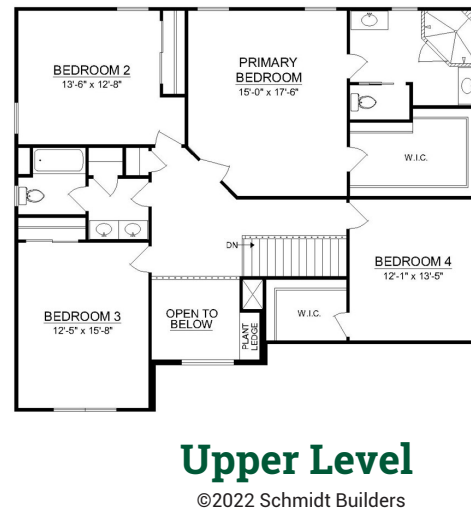
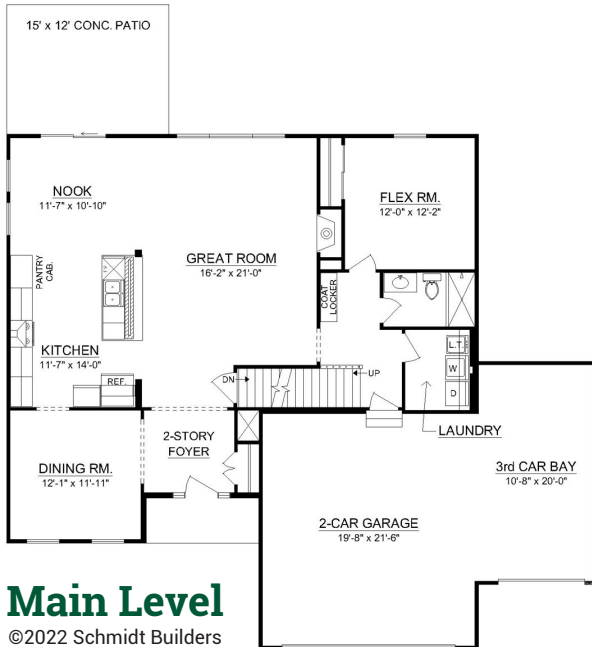
Home Features:

- Covered front porch
- Unfinished lower level
- Natural gas fireplace
- Luxury vinyl plank floors
- Large kitchen island
- Chef's kitchen with GE stainless steel appliances
- Main level bedroom/study
- 9' basement and main level walls
- Delta Faucets throughout
- Spacious owner's suite walk-in shower
- Landscaped
- New home warranty
- Below market interest rate
- Zero closing costs



The Estates of Monroe Crossings Model Home: 200 Shyla Ct., Monroe, OH





Because we are constantly improving our product, we reserve the right to change product features, brand names, dimensions, architectural details and design. This brochure is for illustrative purposes only and is not part of any legal binding contract. 4/24/23