

**AVAILABLE FALL 2023**



©2023 Schmidt Builders. Rendering is artist rendition and may not reflect actual home details, materials, and colors.

**\$579,900**

**Home Features:**

<b>Style</b>	Ranch
<b>Sq. Ft.</b>	2,072
<b>Bed</b>	3
<b>Bath</b>	2
<b>Garage</b>	3-Car <i>with garage door openers</i>

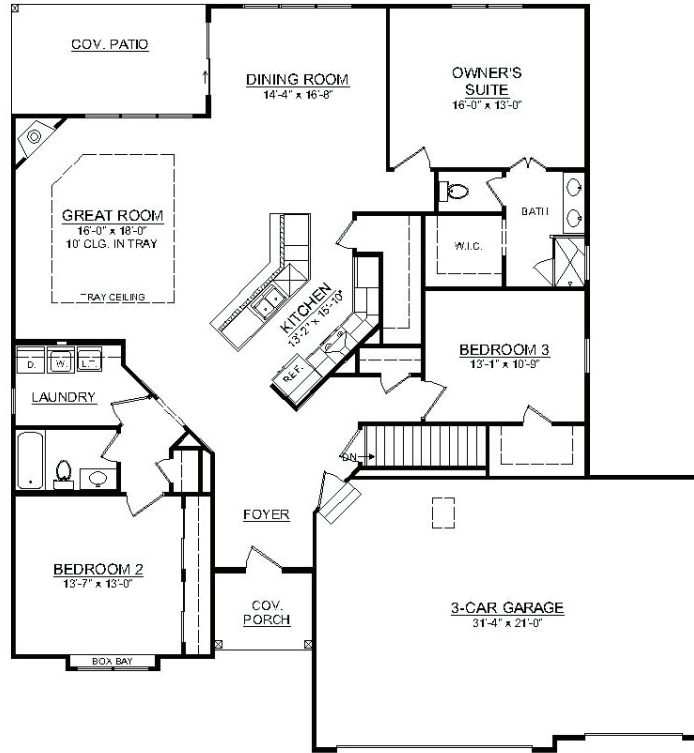
- Unfinished lower level
- Natural gas fireplace
- Luxury vinyl plank floors
- Large kitchen island
- Chef's kitchen with GE stainless steel appliances
- Large dining area
- Delta Faucets throughout
- Spacious owner's suite walk-in shower
- Landscaped
- New home warranty

The Estates of Monroe Crossings Model Home: 200 Shyla Ct., Monroe, OH



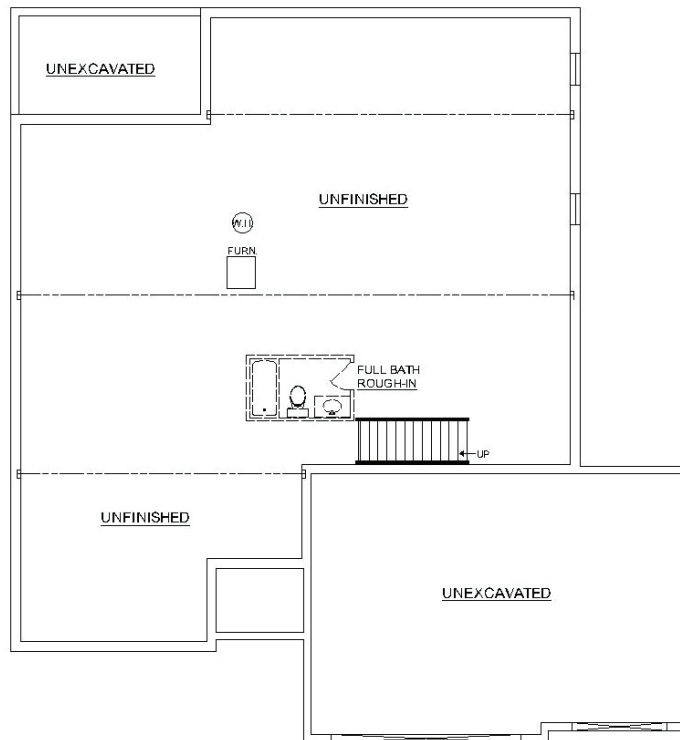
## Main Level

©2023 Schmidt Builders



## Lower Level

©2023 Schmidt Builders



Because we are constantly improving our product, we reserve the right to change product features, brand names, dimensions, architectural details and design. This brochure is for illustrative purposes only and is not part of any legal binding contract. 8/29/23