

**Available Fall 2023**



©2023 Schmidt Builders. Rendering is artist rendition and may not reflect actual home details, materials, and colors.

**\$737,300**

**Style** Ranch

**Sq. Ft.** 2,261

**Bed** 3

**Bath** 2.5

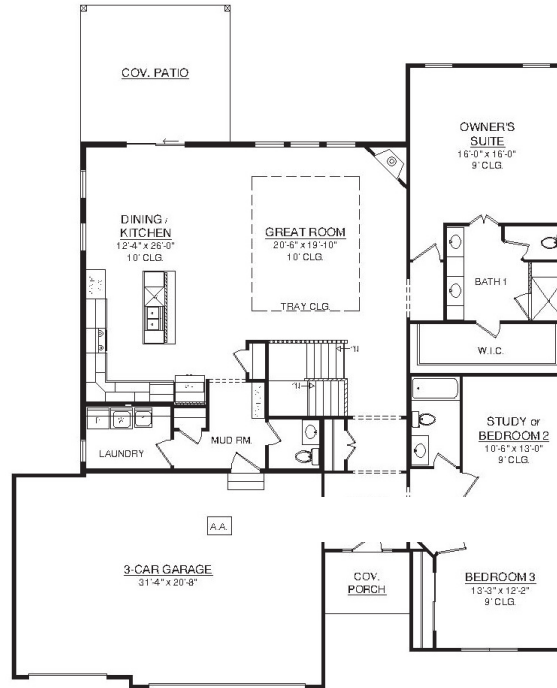
**Garage** 3-Car  
with garage door  
openers

## Home Features:

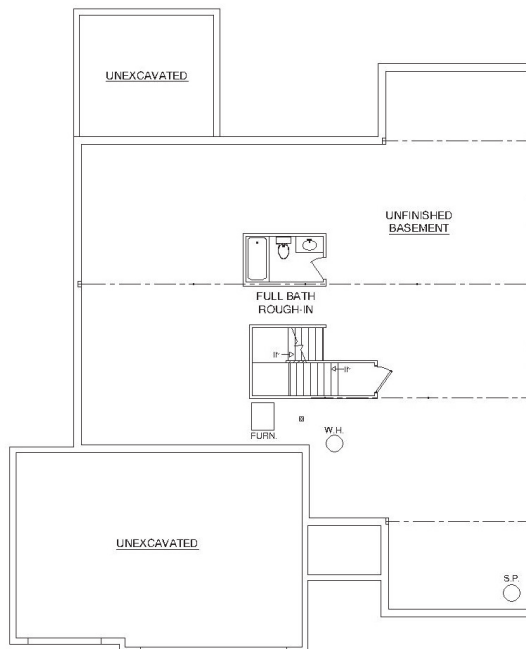
- Covered front entry porch & rear patio
- Chef's kitchen with solid surface countertops, upgraded 42" cabinets, and GE stainless steel appliances
- 9' ceilings
- Luxury vinyl plank floors
- Gas fireplace
- Unfinished lower level
- 3-Car garage
- New home warranty
- Landscaped

The Estates of Monroe Crossings Model Home: 200 Shyla Ct., Monroe, OH





**Main Level**  
©2023 Schmidt Builders



**Lower Level**  
©2023 Schmidt Builders

*Because we are constantly improving our product, we reserve the right to change product features, brand names, dimensions, architectural details and design. This brochure is for illustrative purposes only and is not part of any legal binding contract. 11/16/23*