

MOVE-IN READY!



\$739,900

Style 2-story

Sq. Ft. 2,967

Bed 4

Bath 2.5

Garage 3-Car
with garage door
openers

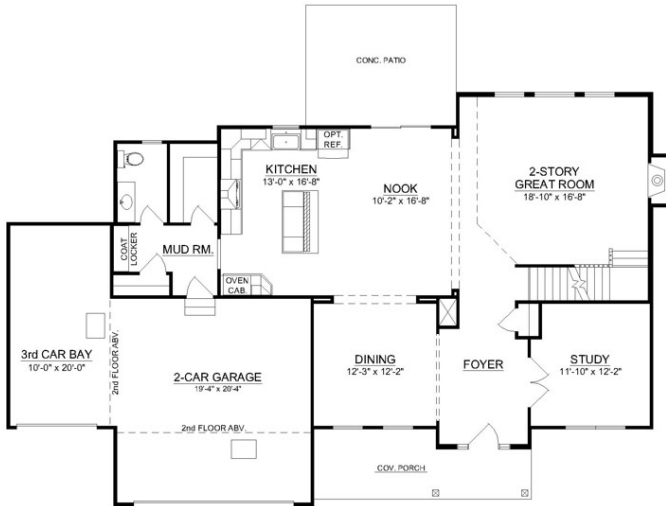
Home Features:

- Covered front entry porch
- Gourmet kitchen with solid surface countertops, upgraded 42" cabinets, and GE stainless steel appliances
- Luxury vinyl plank floors
- Gas fireplace
- Unfinished lower level
- 3-Car garage
- New home warranty
- Landscaped
- Below market interest rate financing
- Zero closing costs



The Estates of Monroe Crossings Model Home: 200 Shyla Ct., Monroe, OH





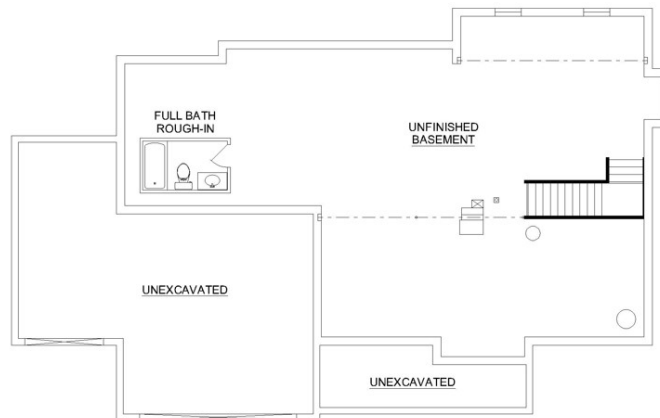
Main Level

©2023 Schmidt Builders



Upper Level

©2023 Schmidt Builders



Lower Level

©2023 Schmidt Builders

Because we are constantly improving our product, we reserve the right to change product features, brand names, dimensions, architectural details and design. This brochure is for illustrative purposes only and is not part of any legal binding contract. 11/16/23