

MOVE - IN READY



©2023 Schmidt Builders.



WAS \$822,100
NOW \$799,900

Style Ranch

Sq. Ft. 3,061

Bed 3

Bath 3.5

Garage 3-Car
with garage door
openers

Home Features:

- Covered front entry and rear deck
- Gourmet kitchen with solid surface countertops, upgraded 42" cabinets, and GE stainless steel appliances
- Engineered hardwood floors
- Gas fireplace
- Finished lower level



Home Savings Features:

- Instant equity with improved pricing
- Below market interest rate and NO closing costs

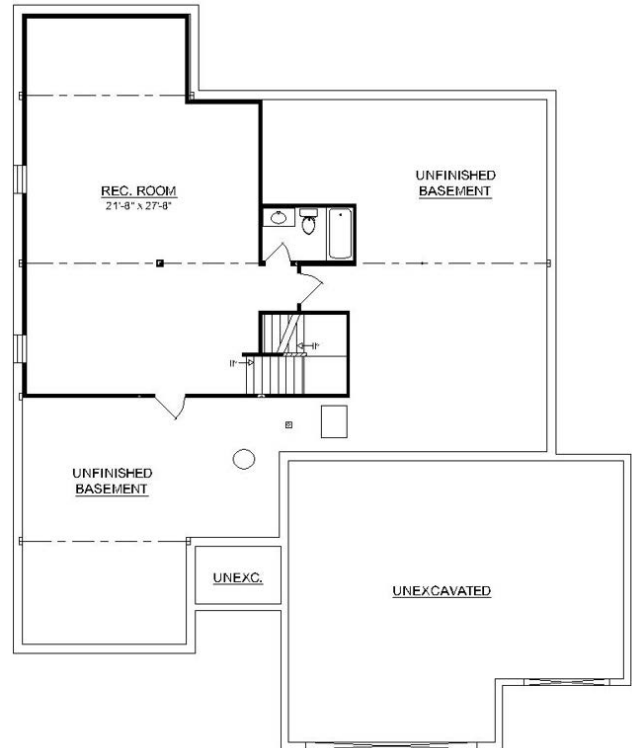
The Estates of Monroe Crossings Model Home: 200 Shyla Ct., Monroe, OH





Main Level

©2022 Schmidt Builders



Lower Level

©2022 Schmidt Builders

Because we are constantly improving our product, we reserve the right to change product features, brand names, dimensions, architectural details and design. This brochure is for illustrative purposes only and is not part of any legal binding contract. 10.2023

