

MOVE-IN READY!



©2023 Schmidt Builders. Rendering is artist rendition and may not reflect actual home details, materials, and colors.



\$554,900

Style Ranch

Sq. Ft. 1,856

Bed 3

Bath 2

Garage 3-Car
*with garage door
openers*

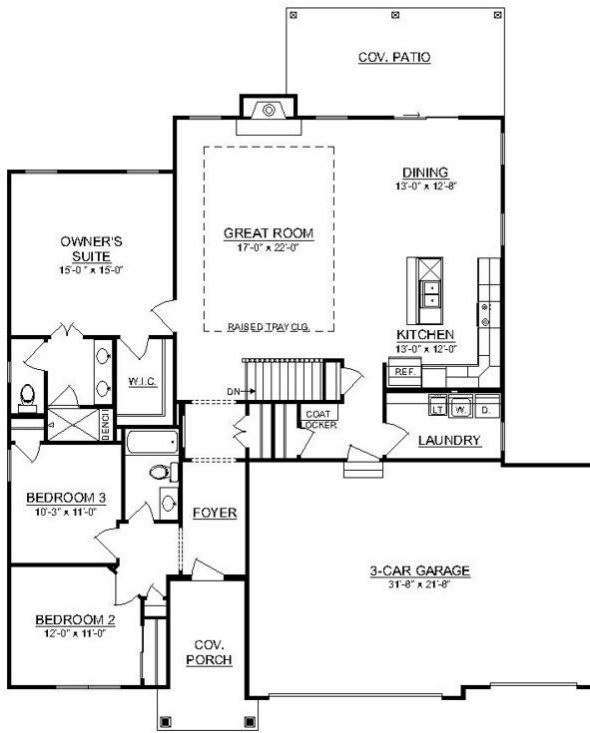
Home Features:

- Covered front entry and rear patio
- Unfinished lower level
- Natural gas fireplace
- Luxury vinyl plank floors
- Large kitchen island
- GE stainless steel appliances
- Delta Faucets throughout
- Spacious owner's suite with spa-like bath
- Landscaped
- New home warranty
- Below market interest rate!
- Zero closing costs!



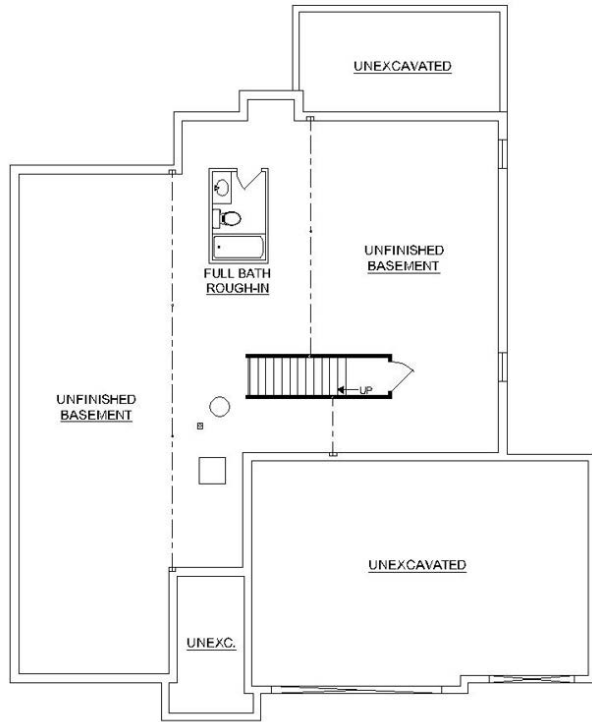
The Estates of Monroe Crossings Model Home: 200 Shyla Ct., Monroe, OH





Main Level

©2022 Schmidt Builders



Upper Level

©2022 Schmidt Builders

Because we are constantly improving our product, we reserve the right to change product features, brand names, dimensions, architectural details and design. This brochure is for illustrative purposes only and is not part of any legal binding contract. 11/20/23