

AVAILABLE WINTER 2023



©2022 Schmidt Builders. Rendering is artist rendition and may not reflect actual home details, materials, and colors.

\$616,900

Home Features:

Style	2-Story
Sq. Ft.	2,633
Bed	4
Bath	2.5
Garage	3-Car <i>with garage door openers</i>

- Covered entry
- Unfinished lower level
- Natural gas fireplace
- Luxury vinyl plank floors
- Large kitchen island
- Chef's kitchen with GE stainless steel appliances
- Main level flex room
- Delta Faucets throughout
- Spacious owner's suite walk-in shower
- Rear deck
- Landscaped
- New home warranty

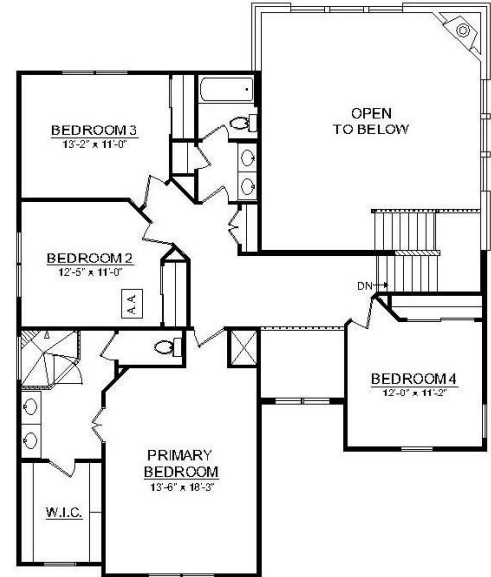
The Estates of Monroe Crossings Model Home: 200 Shyla Ct., Monroe, OH





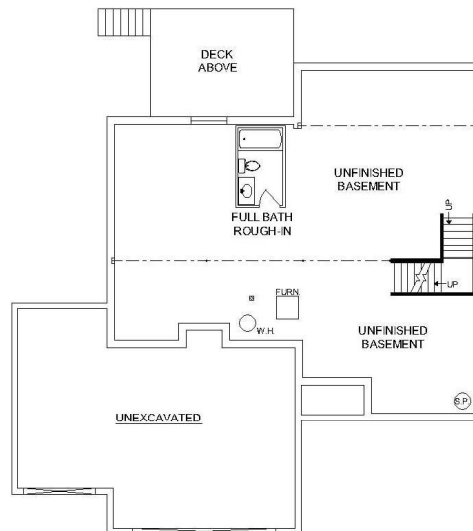
Main Level

©2023 Schmidt Builders



Upper Level

©2023 Schmidt Builders



Lower Level

©2023 Schmidt Builders

Because we are constantly improving our product, we reserve the right to change product features, brand names, dimensions, architectural details and design. This brochure is for illustrative purposes only and is not part of any legal binding contract. 10/16/23